



GOOD MORNING

Have Good Trading Day

TUESDAY



Price is what you pay.  
Value is what you get.

- Warren Buffet



## MARKET PLUSE

### INDIAN INDICES

NAME	CMP	NET CH.	%
SENSEX	26586	+161	+0.61
NIFTY	8013	-31	-0.39

### INDIAN ADR'S

SYMBOL	CLOSE	GAIN/ LOSS %
DRREDDY	51.88	-0.46
HDFCBANK	56.36	-0.51
ICICIBK	9.66	-1.43
INFY	31.25	+0.74
TATAMOTOR	34.38	+0.15
WIPRO	11.77	+0.68

### FII AND MF ACTIVITY

SYMBOL	In Crs.
FIIs Eq (Provisional)	-604.86
FIIs Index Future	-145.80
FIIs Index Options	-247.26
FIIs Stock Future	132.73
FIIs Stock Options	-20.69
DII's Eq (Provisional)	650.47

### CURRENCY

RBI RATE	15-JUN-2015
RUPEE - \$	64.0868
EURO	71.8413
YEN 10	51.9300
GBP	99.5717

## MARKET PLUSE

### GLOBAL INDICES

NAME	CMP	NET CH.	%
DOW	17791	-107	-0.60
NASDAQ	5029	-21	-0.42
NIKKEI	20260	-127	-0.63
HANG SENG	26753	-108	-0.41
SGX NIFTY	7991	-8	-0.10

### WORLD COMMODITIES

FUTURE	US\$	CHANGES
CRUDE	59.98	+0.46
NATURAL GAS	2.916	+0.027
GOLD	1185.2	-0.60
SILVER	16.005	-0.078
COPPER	2.6470	Unch

### WORLD EVENTS

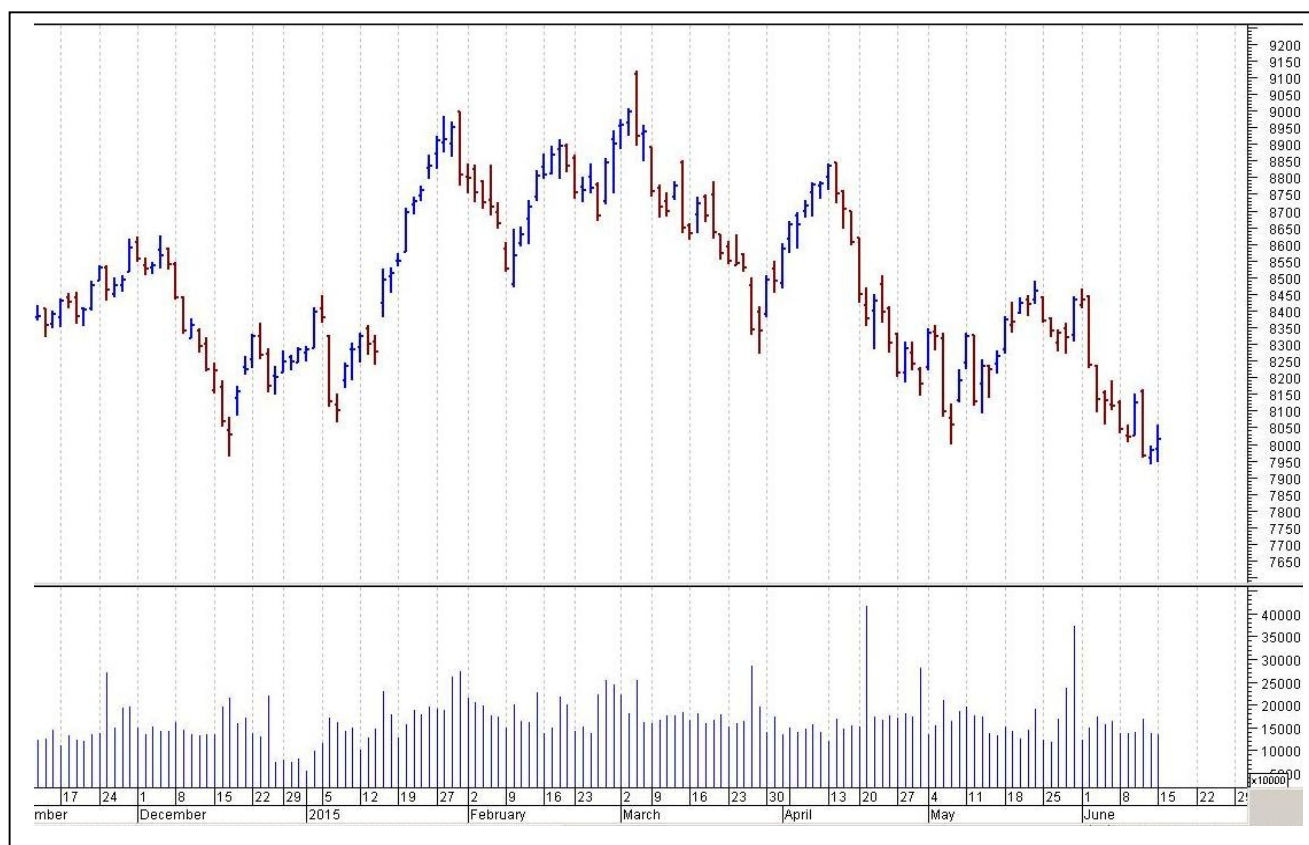
- US: Building Permits
- Housing Starts
- UK:CPI y/y
- PPI Input m/m
- RPI y/y

## TOP STORY

- Essar Oil -Rosneft close to buying 50% stake in group's Gujarat refinery -Gujarat based Vadinar refinery has capacity of 20 million tones.
- GMR -DIAL plans to raise ` 3000 cr via bond market -Funds to be used to refinance existing debt: FE
- Sistema -In Exclusive Talks With Rel Comm On Potential Merger Of Its Indian Telecom Ops via stock swap.
- Punjab National Bank (PNB) seeks to sell Electrotherm, Bharati Shipyard loans to asset reconstruction cos: FE
- Aurobindo Pharma Receives US FDA Approval For Extended Phenytoin Sodium Capsules (An Anti-epileptic Product)
- Wipro Says T-Mobile Poland Selects Co To Provide Integrated Applications & Infra Svcs
- NBCC Says Have Procured 7612.86 Sq m Plot In Jaipur For Real Estate Project



## NIFTY CHART



## MARKET COMMENTARY

Indian markets made a positive start of the new week with benchmarks making a rebound from last week's weakness; although the global environment remained gloomy but the local traders rejoiced some upbeat domestic economic data of strong IIP and steady inflation (CPI) numbers released on Friday after the market hours. The strong performance of IIP was aided by capital goods sector which performed well on the bourses too along with healthcare, auto and oil & gas sectors. Traders also got some support with report that the finance ministry has loosened the purse strings and asked ministries and departments to start spending with focus on capital expenditure as it looks to lift growth with private sector investment yet to get underway. For today's trade Nifty likely to trade in the range between 8040 – 8055 in the upper side and 8000 – 7970 in the lower side.

### MARKET LEVELS

	CMP	SUPPORT LEVELS				RESISTANCE LEVELS			
NIFTY	8013	8000	7970	7950	7910	8040	8055	8065	8080
USDINR									





### FUTURES CORNER

SCRIPS	CLOSE	SUPPORT	TARGET		REMARKS
		STOP LOSS	T1	T2	
BATAINDIA	1014.45	1004	1032	1048	TRADING CALL
SIEMENS	1318.65	1302	1338	1348	TRADING CALL
MINDTREE	1316.5	1308	1328	1334	TRADING CALL

### EQUITY CORNER

SCRIPS	CLOSE	SUPPORT	TARGET		REMARKS
		STOP LOSS	T1	T2	
INOXLEISURE	168.85	166	174	178	TRADING CALL
ABAN	306.35	301	314	324	TRADING CALL

### DELIVERY BASED CALL / INVESTMENT CALL

SCRIPS	CMP	SUPPORT	TARGET		REMARK
		STOP LOSS	T1	T2	

### BULK DEALS (BSE)

SCRIP	CLIENT NAME	BUY/SELL	QUANTITY	PRICE
PIIND	CITIGROUP GLOBAL MARKETS MAURITIUS PVT LTD	S	1,600,000	605
PIIND	IRONWOOD INVESTMENT HOLDINGS	S	3,700,000	605.01
PIIND	CARTICA CAPITAL LTD	B	5,294,249	605

### BULK DEALS (NSE)

SCRIP	CLIENT NAME	BUY/SELL	QUANTITY	PRICE
NIL				

### SCRIP'S IN F&O BAN

(To resume for normal trading below 80% of market wide limit required)

AMTEKAUTO



NIFTY 50 STOCKS: SUPPORT & RESISTANCE						
Symbol	Close	Support 1	Support 2	Pivot Point	Resistance1	Resistance2
ACC	1370.25	1353.17	1336.08	1383.28	1400.37	1430.48
AMBUJACEM	215.65	213.90	212.15	216.85	218.60	221.55
ASIANPAINT	698.55	690.17	681.78	704.78	713.17	727.78
AXISBANK	550.05	545.27	540.48	550.13	554.92	559.78
BAJAJ-AUTO	2332.35	2282.92	2233.48	2311.03	2360.47	2388.58
BANKBARODA	143.00	141.57	140.13	143.93	145.37	147.73
BHARTIARTL	413.65	410.70	407.75	414.55	417.50	421.35
BHEL	247.80	245.67	243.53	248.48	250.62	253.43
BPCL	833.50	827.92	822.33	836.88	842.47	851.43
CAIRN	187.70	178.97	170.23	184.48	193.22	198.73
CIPLA	585.70	574.00	562.30	583.30	595.00	604.30
COALINDIA	394.30	391.17	388.03	395.08	398.22	402.13
DRREDDY	3320.60	3300.47	3280.33	3333.13	3353.27	3385.93
GAIL	397.10	392.67	388.23	396.33	400.77	404.43
GRASIM	3350.20	3324.82	3299.43	3350.38	3375.77	3401.33
HCLTECH	908.05	891.75	875.45	907.30	923.60	939.15
HDFC	1214.55	1192.60	1170.65	1205.30	1227.25	1239.95
HDFCBANK	1005.20	998.88	992.57	1006.32	1012.63	1020.07
HEROMOTOCO	2506.05	2481.53	2457.02	2506.52	2531.03	2556.02
HINDALCO	114.30	113.02	111.73	115.08	116.37	118.43
HINDUNILVR	821.75	810.98	800.22	819.22	829.98	838.22
ICICIBANK	299.20	294.82	290.43	297.58	301.97	304.73
IDEA	175.55	171.13	166.72	173.52	177.93	180.32
IDFC	145.75	144.67	143.58	145.78	146.87	147.98
INDUSINDBK	794.55	788.00	781.45	799.00	805.55	816.55
INFY	990.45	972.70	954.95	985.75	1003.50	1016.55
ITC	298.50	294.08	289.67	298.42	302.83	307.17
KOTAKBANK	1289.70	1260.15	1230.60	1287.55	1317.10	1344.50
LT	1668.40	1648.80	1629.20	1671.60	1691.20	1714.00
LUPIN	1711.85	1697.10	1682.35	1715.75	1730.50	1749.15
M&M	1220.30	1198.12	1175.93	1213.18	1235.37	1250.43
MARUTI	3767.40	3735.63	3703.87	3762.77	3794.53	3821.67
NMDC	115.90	113.87	111.83	115.13	117.17	118.43
NTPC	135.85	134.75	133.65	135.70	136.80	137.75
ONGC	303.95	299.37	294.78	303.13	307.72	311.48
PNB	130.40	129.20	128.00	131.20	132.40	134.40
POWERGRID	141.20	139.57	137.93	142.28	143.92	146.63
RELIANCE	901.75	892.83	883.92	898.92	907.83	913.92
SBIN	250.25	247.53	244.82	251.57	254.28	258.32
VEDL	181.35	178.03	174.72	183.42	186.73	192.12
SUNPHARMA	837.70	815.93	794.17	831.92	853.68	869.67
TATAMOTORS	426.35	420.32	414.28	424.13	430.17	433.98
TATAPOWER	72.05	70.93	69.82	72.32	73.43	74.82
TATASTEEL	297.00	294.45	291.90	298.60	301.15	305.30
TCS	2504.80	2483.72	2462.63	2502.08	2523.17	2541.53
TECHM	554.05	546.37	538.68	553.68	561.37	568.68
ULTRACEMCO	2710.80	2692.73	2674.67	2722.07	2740.13	2769.47
WIPRO	540.90	532.50	524.10	540.25	548.65	556.40
YESBANK	803.55	796.07	788.58	805.53	813.02	822.48
ZEEL	339.25	333.67	328.08	336.83	342.42	345.58



## CORPORATE ACTION / BOARD MEETINGS

NSE Download Ref.No.:NSE/CML/29902:- Face Value Split - JMT Auto Limited (JMTAUTOLTD) from Rs. 10 to Rs. 2 wef June 25, 2015

NSE Download Ref.No.: NSE/SURV/29940:- Mastek Limited (Symbol- MASTEK) shall be transferred from trade for trade segment (series: BE) to rolling segment (series: EQ) with effect from June 26, 2015 (Friday).

NSE Download Ref.No.:NSE/CML/29963:- Suspension of trading in Securities of Companies for Non-Compliance of certain clauses of the Listing Agreement: Kingfisher Airlines Limited, UB Engineering Limited and Varun Industries Limited wef June 23, 2015.

### BOARD MEETINGS

COMPANY NAME	DATE	PURPOSE	RS. PER SH.
BANKBARODA	16-Jun-15	Annual General Meeting/ Dividend	3.2
GRUH	16-Jun-15	Annual General Meeting/ Dividend	2
ASHOKLEY	17-Jun-15	Annual General Meeting/ Dividend	0.45
LAKSHVILAS	17-Jun-15	Dividend	2
VISHNU	18-Jun-15	Dividend	1
CMAHENDRA	18-Jun-15	Bonus 1:1	
WELSPUNIND	18-Jun-15	Dividend	7.5
DENORA	18-Jun-15	Dividend	1.5
ATUL	18-Jun-15	Annual General Meeting/ Dividend	8.5
KOTAKBANK	18-Jun-15	Annual General Meeting/ Dividend	0.9
DENABANK	18-Jun-15	Annual General Meeting/ Dividend	0.9
WELCORP	18-Jun-15	Dividend	0.5
SYNDIBANK	18-Jun-15	Annual General Meeting/ Dividend	4.7
SFCL	18-Jun-15	Dividend	1
ALBK	18-Jun-15	Annual General Meeting/ Dividend	1.63
UNIONBANK	18-Jun-15	Annual General Meeting/ Dividend	6
MAHABANK	19-Jun-15	Annual General Meeting/ Dividend	0.8
NAVINFLUOR	19-Jun-15	Dividend	8.5
HINDUNILVR	19-Jun-15	Annual General Meeting/ Dividend	9
BIRLACORPN	19-Jun-15	Annual General Meeting/ Dividend	6
ESSELPACK	19-Jun-15	Annual General Meeting/ Dividend	1.6
PSB	19-Jun-15	Annual General Meeting/ Dividend	0.6

## NEWS & RUMOURS:

- Gold (Spot Dollar) major support = \$1161/\$1132 & Resistance = \$1212/\$1239.
- Crude oil range->\$54 to \$64.
- U.S. Stocks Decline Amid Greek Debt Standoff, Factory Data Miss: - U.S. stocks retreated, with the Standard & Poor's 500 Index below its average price during the past 100 days, after weekend negotiations between Greece and its creditors broke down and factory data were weaker than forecast.
- Draghi Says Greece Must Act Next to Secure Strong Bailout Deal: - European Central Bank President Mario Draghi said it's up to the Greek government to take the next step to break the deadlock in talks with creditors and secure a deal on its bailout.
- Gold spikes to pare losses, amid latest collapse in Greek debt talks: - Gold futures spiked on Monday afternoon paring earlier losses, as the latest collapse of talks in the Greek Debt Crisis sent indications that the cash-strapped nation could default on its sovereign debt.
- Crude oil futures edge lower as stronger dollar weighs: - Crude oil futures declined on Monday, as a broadly stronger U.S. dollar combined with concerns over a global supply glut drove down prices. Oil prices typically weaken when the U.S. currency strengthens as the dollar-priced commodity becomes more expensive for holders of other currencies.
- Natural gas futures rally more than 2% in early trade: - U.S. natural gas prices rose for the first time in three sessions on Monday, as investors returned to the market to seek cheap valuations in wake of recent losses.

## TRENDS & OUTLOOK – DATE: 16- June- 2015

### PRECIOUS METALS:

COMMDITY (MCX)	S2	S1	PIVOT POINT	R1	R2
GOLD (Aug)	26465	26700	26966	27291	27666
SILVER (July)	34700	35800	36900	38100	39400

### BASE METALS

COMMDITY (MCX)	S2	S1	PIVOT POINT	R1	R2
COPPER (June)	364	370	375	381	387
ZINC (June)	130.30	132.55	135	137.20	139.50
LEAD (June)	110.70	113.20	117	119.10	121.30
NICKEL (June)	792	810	831	848	867

### ENERGY

COMMDITY (MCX)	S2	S1	PIVOT POINT	R1	R2
CRUDE OIL (June)	3630	3700	3810	3939	4050
NATURAL GAS (June)	172	177	182	190	196

### DATE TALKS : TODAY'S ECONOMIC DATA :

TIC Long-Term Purchases, RBA Assist Gov Debelle Speaks, Monetary Policy Meeting Minutes of AUD, European Court of Justice Ruling, German ZEW Economic Sentiment, ZEW Economic Sentiment, Building Permits, Housing Starts.





**Registered Office**

Indira House, 3rd Floor, 5 Topiwala Lane,  
Opp. Lemington Road Police Station, Grant Road (East), Mumbai - 400007.

**Corporate Office**

'Ramavat House' E-15, Saket Nagar, Indore - 452018 (M.P.)

**Customer Care**

Tel: +91-731-4097170/ 71/ 72/ 73/ 74 M. +91 93031 72345

Email: [customercare@indiratrade.com](mailto:customercare@indiratrade.com) [www.indiratrade.com](http://www.indiratrade.com)



**INSTITUTIONAL DEALING UNIT**

Africa House, 5, Topiwalla Lane, Lamington Road, Mumbai, 400007

Tel: +91 22 30080678 Fax : +91 22 23870767 Email : [ie@indiratrade.com](mailto:ie@indiratrade.com)

**Disclaimer**

This report is for private circulation within the Indira Group. This report is strictly confidential and for information of the selected recipient only and may not be altered in any way, transmitted to, copied or distributed, in part or in whole, to any other person or to the media or reproduced in any form. This report should not be construed as an offer or solicitation to buy or sell any securities or any interest in securities. It does not constitute a personal recommendation or take into account the particular investment objectives, financial situations, or any such factor. The information, opinions estimates and forecasts contained here have been obtained from, or are based upon, sources we believe to be reliable, but no representation of warranty, express or implied, is made by us to their accuracy or completeness. Opinions expressed are our current opinions as of the date appearing on this material only and are subject to change without notice.